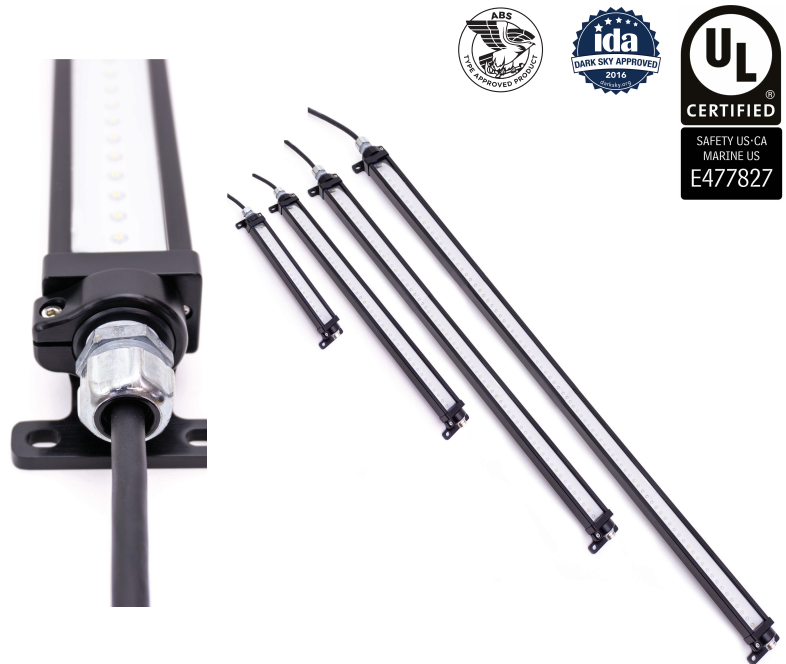


### KEY FEATURES

- Designed for marine and industrial applications
- Optimized thermal management with extruded aluminum housing
- Type II anodized housing withstands exposure to certain chemicals
- Factory-sealed housing provided with 3ft cable and cable gland
- Vented enclosure to prevent stress on electronics and gaskets
- Lightweight housing for deployment in complex projects
- Adjustable mounting bracket allows for 360° rotation

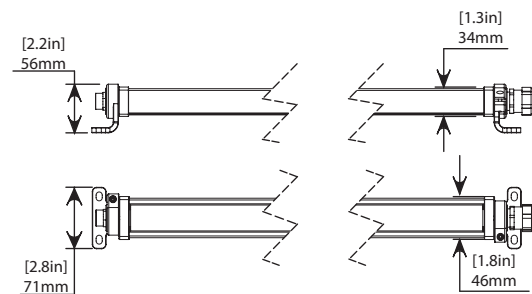


### TECHNICAL SPECIFICATIONS / MAXIMUM RATINGS

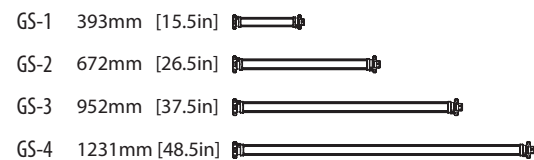
<b>HOUSING</b>	Copper Free Aluminum and Polycarbonate Lens
<b>MOUNTING</b>	See Page 2 for DETAILS
<b>INPUT VOLTAGE</b>	120VAC ± 10% (60Hz)
<b>POWER (TYP)</b>	<b>GS-1:</b> 10W   <b>GS-2:</b> 20W   <b>GS-3:</b> 31W   <b>GS-4:</b> 41W
<b>CURRENT (TYP)</b>	<b>GS-1:</b> 0.09A @ 120VAC   <b>GS-2:</b> 0.17 @ 120VAC <b>GS-3:</b> 0.26A @ 120VAC   <b>GS-4:</b> 0.34 @ 120VAC
<b>CONNECTIONS</b>	0.9m (3ft) Flying Lead (Custom Lengths Available)
<b>TEMPERATURE RANGE</b>	-40°C to +65°C (Case ~30°C above ambient)
<b>CERTIFICATIONS</b>	Certified to UL 1598 & UL 1598A, UL 8750; CSA 22.2 No. 250.0, CSA 22.2 No. 250.13
<b>INGRESS PROTECTION</b>	IP66/67 Suitable for wet locations. Marine Outside type (Salt water).
<b>COLOUR TEMP RANGE</b>	<b>50:</b> 5000K   <b>Special Order:</b> 2700-6500K
<b>CRI VALUE (MIN)</b>	<b>50:</b> 70
<b>TOTAL LUMENS</b>	See Page 2 for DETAILS
<b>LUMEN MAINTENANCE</b>	LM-80 > 60,500 hrs
<b>WEIGHT</b>	See Page 2 for DETAILS

\* The ambient temperature during lifetime, lumen and chromaticity determination is 25°C ± 1°C.

### DIMENSIONS



#### GS Series Fixture Length:

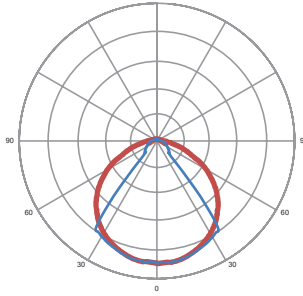


### WARRANTY

Five (5) year limited warranty to the original purchaser. The warranty covers defects in materials and workmanship under normal use and service.

For additional information see:  
<https://nemalux.com/legal>

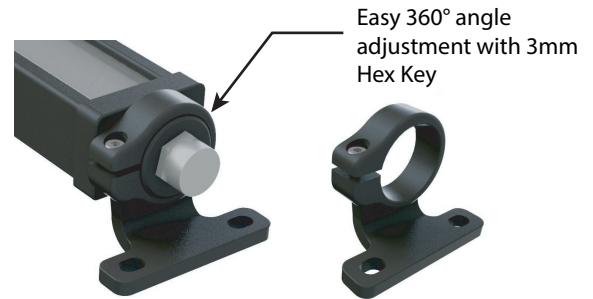
## OPTIC OPTIONS



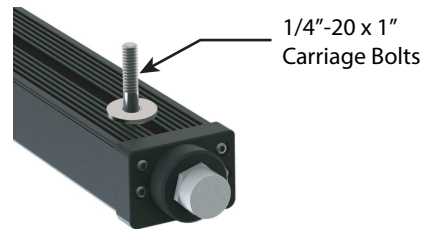
Model	Lumens
GS-1	582
GS-2	1292
GS-3	2003
GS-4	2714

## MOUNTING OPTIONS

### A - ADJUSTABLE MOUNTING BRACKET

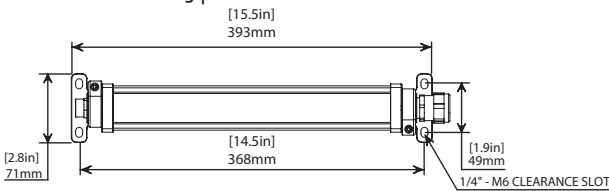


### B - CARRIAGE BOLT/SURFACE MOUNT

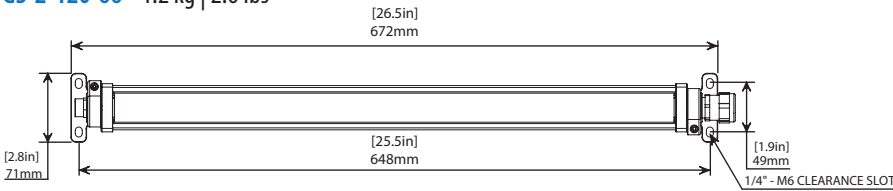


## MOUNTING DIMENSIONS

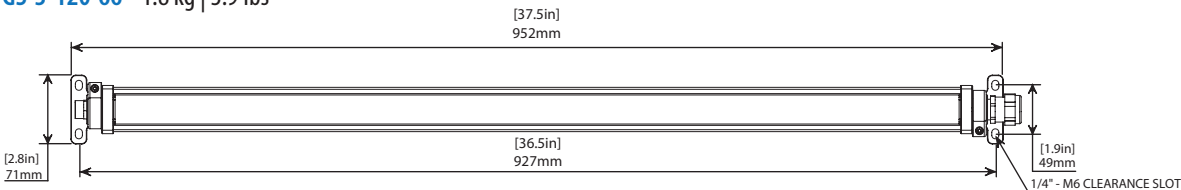
**GS-1-120-66** 0.8 kg | 1.8 lbs



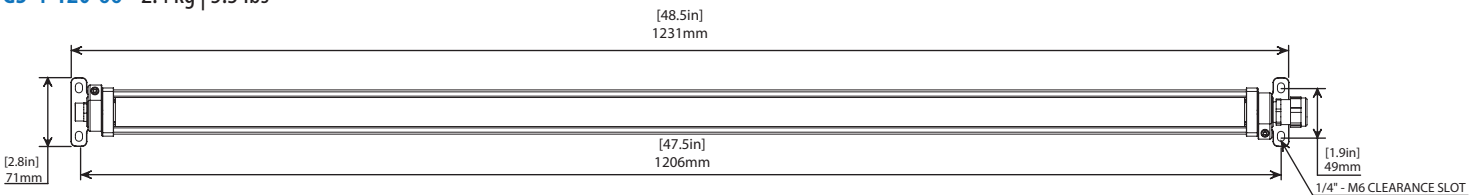
**GS-2-120-66** 1.2 kg | 2.6 lbs



**GS-3-120-66** 1.8 kg | 3.9 lbs



**GS-4-120-66** 2.4 kg | 5.3 lbs



## ORDERING INFORMATION

PROJECT NAME		TYPE
PROJECT LOCATION		
COMMENT		DATE
PREPARED BY		

## MODEL SELECTOR

Sample Number: GS-1-50-W-BLK-0-120-66-A

MODEL	COLOUR	OPTIC	FINISH	LOCATION	VOLTAGE	INGRESS	MOUNT
-	-	<b>W</b>	<b>BLK</b>	<b>0</b>	<b>120</b>	<b>66</b>	
<b>GS-1</b>	<b>50</b> - 5000K	<b>W</b> - Wide Beam (No Optic)	<b>BLK</b> - Black  Custom finishes available. Please contact for details. <sup>1</sup>	<b>0</b> - Ordinary Location	<b>120</b> - 120 VAC	<b>66</b> - IP66	<b>A</b> - Adjustable <b>B</b> - Carriage Bolt
<b>GS-2</b>							
<b>GS-3</b>	Special Order:						
<b>GS-4</b>	<b>30</b> - 3000K <sup>1,2</sup>						
	<b>35</b> - 3500K <sup>1</sup>						
	<b>40</b> - 4000K <sup>1</sup>						
	<b>45</b> - 4500K <sup>1</sup>						
	<b>55</b> - 5500K <sup>1</sup>						
	<b>65</b> - 6500K <sup>1</sup>						

## CUSTOM OPTIONS

### WIRING

Other wire lengths available in 30 cm (1 ft) increments.<sup>1</sup>

### NOTES:

1. Minimum order quantities, additional costs and lead times may apply.
2. IDA Fixture Seal of Approval only applies to fixtures with a CCT of 3000K or less, and have fixed mounts aiming the fixture perpendicular to the ground.